

Screening of Common bean (*Phaseolus vulgaris* L) Germplasm for Drought Stress

Priya S.*¹ and Franklin Charles Jose²

Received: 06 Nov 2020 | Revised accepted: 14 Jan 2021 | Published online: 19 Jan 2021
© CARAS (Centre for Advanced Research in Agricultural Sciences) 2021

ABSTRACT

Common bean is a species having high nutritional composition. Drought response in plants is complex phenomenon relating interactions between structure, functions and development of the plant. The Improvement of drought resistant for common bean has major objectives for many breeding programs. The growth of the plant, related to the parameter plays a vital role in the selection criteria for drought resistance. The increasing drought tolerance in commercial varieties is highly desirable. 20 varieties of common bean leaves were collected, it is subjected in *in vitro* water stress with 10% polyethylene glycol 6000 (PEG 6000). The parameters are determined as a relative water content (RWC), seedling root length, leaf area, stomatal index, wax and proline. The result points out that these varieties responded differently during the drought stress. Tolerant and Susceptible comes under the varieties that are categorized which are based on RWC. The tolerant varieties maintain a high-water content. Generally, the tolerant varieties are higher in seedling root length, leaf area, stomatal index, wax than the susceptible varieties. The proline accumulations are higher in susceptible varieties when compared to the tolerant varieties. A significant correlation was observed from the above parameters. The results are discussed with reference to the plant's response during drought.

Key words: Common bean, Drought, Proline, Relative water content, Stomatal index, Susceptible, Tolerant, Wax

The common bean seeds (*Phaseolus vulgaris* L) are rich in proteins, carbohydrates, fibers and minerals which makes a good source of nutrients [1]. Droughts improvement of drought resistance in common bean is a major objective for many breeding programs [2]. Drought resistances in genotypes are associated with different kinds of mechanisms such as morphological and physiological functions which maintain the growth of the plant. It is expected that plants will show an increased tolerance to drought which has the capacity to protect their conductive tissue [3]. The drought susceptibility of a genotype, often measured as function of the reduction that yields under drought stress [4]. Relative water Content (RWC), is used as key indicator of the degree cell and tissue hydration, that is crucial when the optimum physiological functioning and growth processes is taking place [5]. RWC, an important determinant of survival of leaves and metabolic activity [6] it is an attribute for discriminating drought tolerant and sensitive genotypes [7]. The tolerant genotypes maintained higher water status in leaves than the susceptible genotypes [8-9]. Rooting depth is an important component in determining overall drought tolerant in beans and in root architecture characters no relationship between number of basal whorls and drought tolerance [10]. Root architecture is of primary importance in determining and developing drought tolerant in common bean [11].

Leaf area is the most important morphological

adaptation [12]. Generally, the tolerant genotypes maintained a greater leaf area rate than the susceptible genotypes [13]. The drought tolerant species reduce the water loss either by reducing leaf area in less effect on the biomass production [14]. The tolerant genotype was characterized by a higher percentage of stomata and a wider stomata pore diameter than the susceptible genotype [15]. Despite the mechanism of drought tolerance, a canopy that is able to use more water has more open stomata, a higher depression of canopy temperature and higher C-13 discrimination in plant matter [16]. Proline accumulation is one of the most frequently reported water stresses induced biochemical response in plants. It's often considered to be involved in stress resistance mechanisms [17]. Some studies have suggested that proline accumulates in drought susceptible cultivars than the tolerant varieties [18]. These traits are also relevant when breeding plants for hot, irrigated environments [19]. Leaf epicuticular wax content decreased net radiation in the field, and decreased cuticular transpiration. Epicuticular wax is an effective component of drought resistance [20]. Conditions of water stress, as may have developed in this dryland study, were found to promote epicuticular content [21]. This study is carried out with 20 different varieties of common bean, which were measured using parameters such as root architecture, leaf area, stomatal index, proline, and major drought stress inducing 10% of polyethylene glycol (PEG) for relative water content.

MATERIALS AND METHODS

The trifoliate leaves *in-vitro* water stress induced 10 percent of polyethylene glycol (PEG) 6000 at 6 hours. Leaf

*Priya S.
priasub31@gmail.com

^{1,2}Department of Botany, Government Arts College,
Udhagamandalam - 643 002, The Nilgiris, Tamil Nadu

water content was estimated by a following equation:

$$\text{RWC (\%)} = \frac{\text{FW} - \text{DW}}{\text{TW} - \text{DW}} \times 100$$

Whereas, (FW- fresh weight, DW- oven dry weight at 37°C for 24 Hrs and TW- Turgid Weight) of the leaflets [22]. Seeds washed with 1% of Tween 20 on the germinate sheets and 2% of kanamycin acid sulphate antibiotic agents were added and after 10 days root architecture characters were measured [23-24].

The leaves were selected randomly in each variety and leaves were spread over the square centimeter graph paper and outline of leaf was drawn. The leaf area calculated in each square centimeter [25]. To study the stomatal index, fresh leaves were directly fixed into the fixative FAA (Formalin, Acetic acid and Alcohol in the ratio 1:1:18 respectively). The epidermal layers (adaxial and abaxial surface) were peeled and placed in 30% Hydrogen peroxide, later it is stained in 1% of saffron and finally mounted in glycerin. The stomata and frequency distributions were formulated using the stomatal Index (SI) thus designated as:

$$\text{SI} = \frac{\text{No. of Stomatal (S)}}{\text{No. of epidermal cells (E)+S}} \times 100$$

Number of stomata per mm [26].

Free proline levels were determined using the ninhydrin reaction according to the method of [27-28]. Proline concentration was determined from a proline standard curve.

Freshly harvested was immersed in 15ml of redistilled chloroform and allowed 20s (only the epicuticular wax will be extracted into chloroform, a longer time may extract the inner lipids), the chloroform extract is boiled on water bath until the smell of chloroform goes off completely. About 5ml of wax reagent (20gm of potassium dichromate with 40ml of deionized water the resulting slurry is then mixing with 1 lit of H₂SO₄ (concentrated) is added and boiled for about 30min in water bath. The boiled sample is cooled and 12ml of deionized water is added. After cooling, the extract is filtered using the filter paper and filtered was collected. The intensity of color is determined using spectrophotometer at 590nm [29]. Finally, statistical analysis was done by using spss software version 20.

RESULTS AND DISCUSSION

Drought tolerant parameters such as RWC, seedling root architecture characters, leaf area, stomatal index and proline were measured and the mean and standard deviation in tolerant and susceptible varieties were calculated. The Pearson correlations were observed in the above parameters with all the 20 varieties of common bean (Table 3). Among the 20 different varieties of common bean, tolerant and susceptible varieties were categorized based on RWC in 10% PEG 6000. The tolerant varieties have high water holding capacity (68-62%) when compared to susceptible varieties (49-60%) in 6 hours stress. The tolerant varieties are LR 4, 1, 15, 12, 8, 9, 2 and susceptible varieties are LR 14, 6, 18, 5, 16, 19, 20 respectively (Table 1).

Table 1 Relative Water Content (RWC) in 20 landraces of common bean subjected to *in-vitro* water stress with 10% polyethylene glycol 6000 (PEG)

| Landraces | RWC (%) | | | Categorized genotypes | | |
|-----------|---------|-------|-------|-----------------------|-------|----------------------|
| | 2 Hrs | 4 Hrs | 6 Hrs | Landraces | 6 Hrs | Categorized genotype |
| LR 1 | 81 | 72 | 67 | LR 4 | 68 | Tolerant |
| LR 2 | 82 | 73 | 66 | LR14 | 49 | Susceptible |
| LR 3 | 80 | 66 | 51 | LR 1 | 67 | Tolerant |
| LR 4 | 87 | 76 | 68 | LR 6 | 58 | Susceptible |
| LR 5 | 76 | 64 | 57 | LR15 | 66 | Tolerant |
| LR 6 | 80 | 68 | 58 | LR 18 | 50 | Susceptible |
| LR 7 | 74 | 62 | 51 | LR12 | 65 | Tolerant |
| LR 8 | 85 | 67 | 64 | LR 5 | 57 | Susceptible |
| LR 9 | 79 | 67 | 62 | LR 8 | 64 | Tolerant |
| LR 10 | 80 | 67 | 56 | LR16 | 57 | Susceptible |
| LR 11 | 81 | 63 | 54 | LR 9 | 62 | Tolerant |
| LR12 | 79 | 71 | 65 | LR19 | 55 | Susceptible |
| LR 13 | 81 | 67 | 51 | LR 2 | 66 | Tolerant |
| LR14 | 75 | 58 | 49 | LR20 | 60 | Susceptible |
| LR15 | 82 | 73 | 66 | | | |
| LR16 | 88 | 73 | 57 | | | |
| LR 17 | 80 | 69 | 51 | | | |
| LR 18 | 80 | 61 | 50 | | | |
| LR19 | 83 | 69 | 55 | | | |
| LR 20 | 81 | 70 | 60 | | | |

The root architecture character traits of the tolerant and susceptible varieties give different values. The tolerant varieties show the deep tap root length 16cm in LR 2 where the susceptible varieties show 5cm in LR 5. The numbers of basal root is higher in tolerant varieties 40 in LR 1 and lower 1 LR 4. In susceptible varieties the number of basal root is higher 40 in LR 19 and lower 24 in LR 16. Similarly, the

tolerant varieties have higher number of root whorls with an average of 5.2 in LR 12 and lower 2.5 in LR 2. The susceptible varieties have highest number of root whorls with an average 5.16 in LR 18 and lowest 3.5 in LR 6 and 19. The tolerant varieties have higher number of basal root whorls with an average of 3.75 in LR 9 than the susceptible varieties with an average 2 in LR 16 (Table 2).

Table 2 Root architecture characters of tolerant and susceptible in common bean varieties

| Landraces | Categorized genotypes | Root System (cm) | | | | Leaf area (cm) ² | Wax (μg dm ⁻²) | Leaf area (cm) ² | | Wax (μg dm ⁻²) | |
|-----------|-----------------------|------------------|----------------|-----------------|-----------------------|-----------------------------|----------------------------|-----------------------------|-----------|----------------------------|-----------|
| | | Tap root length | No. basal root | No. root whorls | No. basal root whorls | | | Adaxial | Abaxial | Control | Test |
| LR 4 | Tolerant | 6.66±1.75 | 1.66±0.81 | 3.83±1.16 | 2.75±0.95 | 75.8±3.43 | 367.5±4.7 | 16.6±0.91 | 22.9±0.59 | 0.75±0.8 | 1.24±1.1 |
| LR14 | Susceptible | 5.16±1.8 | 24.6±4.08 | 4.16±1.16 | 3.75±0.5 | 68.6±9.2 | 68.5±4.8 | 5.6±0.7 | 13.1±1.01 | 1.78±0.04 | 2.06±0.09 |
| LR 1 | Tolerant | 13.3±2.33 | 40.6±3.52 | 4.16±1.16 | 3.5±0.5 | 64.2±8.75 | 25.6±3.8 | 15.6±0.54 | 26.3±0.91 | 1.05±0.03 | 1.5±0.22 |
| LR 6 | Susceptible | 14.1±0.98 | 32.5±3.39 | 3.5±1.37 | 2.25±1.25 | 60.5±5.3 | 34.2±4.7 | 21.7±0.38 | 33.8±0.64 | 1.29±0.06 | 1.34±0.03 |
| LR15 | Tolerant | 9.83±3.76 | 15.5±2.88 | 4.5±1.04 | 2.25±0.5 | 54.5±8.2 | 34.2±4.3 | 25.8±0.54 | 25.3±0.86 | 1.07±0.05 | 1.34±0.07 |
| LR 18 | Susceptible | 10.8±0.75 | 25.8±4.87 | 5.16±0.75 | 3.4±1.51 | 45.1±8.4 | 25.6±3.3 | 21.5±1.1 | 32.1±0.73 | 1.04±0.10 | 2.13±0.06 |
| LR12 | Tolerant | 8.16±1.16 | 28.5±2.25 | 5.2±0.75 | 3.5±1.29 | 73.6±7.47 | 102.6±7.2 | 19.2±0.95 | 24.4±1.21 | 0.89±0.06 | 1.44±0.06 |
| LR 5 | Susceptible | 5.3±1.03 | 28.8±2.92 | 3.66±1.36 | 3±0.81 | 105.5±5.5 | 52.2±4.2 | 18.1±0.78 | 22.8±0.66 | 1.04±0.02 | 1.76±0.06 |
| LR 8 | Tolerant | 15±1.41 | 38.3±5.04 | 4.5±1.04 | 3±0.81 | 84.5±7.0 | 59.9±4.6 | 18.5±0.98 | 30.3±0.62 | 0.65±0.05 | 1.12±0.09 |
| LR16 | Susceptible | 14.8±1.47 | 24.1±4.02 | 4±1.41 | 2±0.71 | 74.1±4.71 | 42.8±3.7 | 5.32±0.92 | 28.1±0.54 | 0.97±0.05 | 1.33±0.04 |
| LR 9 | Tolerant | 6.16±1.60 | 40.6±3.72 | 5±0.89 | 3.75±0.95 | 71.6±6.86 | 222.2±5.8 | 13.2±0.73 | 26.4±0.57 | 0.62±0.08 | 1.12±0.09 |
| LR19 | Susceptible | 15.1±1.94 | 40.5±3.61 | 3.5±1.64 | 2.2±0.83 | 73.8±6.08 | 192.3±9.8 | 12.1±0.50 | 32.1±1.00 | 0.97±0.03 | 1.78±0.10 |
| LR 2 | Tolerant | 16.3±1.21 | 29.6±3.98 | 2.5±1.64 | 2.25±0.5 | 54.2±8.49 | 307.7±4.1 | 18.4±0.98 | 34.9±1.44 | 0.95±0.03 | 1.05±0.02 |
| LR20 | Susceptible | 14.6±1.75 | 39.3±4.71 | 5.33±0.81 | 3.8±0.83 | 60.1±11.1 | 111.1±7.3 | 18.4±0.45 | 28.5±0.72 | 0.69±0.11 | 1.09±0.06 |

The leaf area in tolerant varieties have high leaf surface area 84.5 cm² in LR 8 and lower leaf surface area 54 cm² in LR 2 and LR 5. In susceptible varieties higher leaf surface area is about 105.5 cm² in LR 5 and lower leaf surface area is about 45.1 cm² in LR 18 (Table 2). Different values were observed between tolerant and susceptible varieties based on leaf area. The stomata types are observed in 20 different varieties of common bean. There are two types of stomata (anomocytic and anisocytic) based on their structure (Fig 2). Generally, anomocytic stomata that are found abundance in both tolerant and susceptible varieties. In tolerant varieties, the highest stomatal index of both adaxial and abaxial surface is 25.8mm² (LR 15) and 34.9 mm² (LR 2) respectively. Similarly, the lowest stomatal index of adaxial and abaxial surface is 13.2mm² (LR 9) and 22.9 mm² (LR 4) respectively. In susceptible varieties, the highest stomatal index of both adaxial and abaxial surface is 21.7mm² (LR 6) and 33.8 mm² (LR 6) respectively. Similarly, the lowest stomatal index of adaxial and abaxial surface is 5.32mm² (LR 16) and 13.1 mm² (LR 14) respectively (Table 2).

The proline accumulations are observed while it is treated with 10% PEG 6000 at 6 hours stress. The susceptible varieties have higher proline content than the tolerant varieties. The higher proline content is 2.13 μM/g tissues in LR 18 and lower proline content is 0.62 μM/g tissue in LR 9 (Table 2). The positive correlation which has been observed between all the 20 different varieties in all the parameters such as RWC, seedling root architecture characters, leaf area, stomatal index and proline are given in the illustrated table (Table 2). Different value that is observed between tolerant and susceptible varieties are based on RWC, tap root length, leaf area, abaxial surface of stomatal index and proline as

given in the figure (Fig 1). The leaf surface wax amount on these 20 varieties from minimum 25.64μg dm⁻² to a maximum of 367.52 μg dm⁻². The high wax amount contains LR 4- 367.52 μg dm⁻², LR 10 -358.77 μg dm⁻² and LR 2- 307.69 μg dm⁻² and low wax amount contain LR 1 and LR 18- 25.64μg dm⁻², and LR 6- 34.1864μg dm⁻² (Table 2).

The positive correlation observed between the characterizations of 14 varieties in common bean with all the parameters such as RWC, seedling root characters, leaf area, stomatal index, wax, and proline are mentioned in the table (Table 2). Different values that are observed between tolerant and susceptible varieties are based on RWC; tap root length, leaf area abaxial surface of stomatal index, wax and proline as illustrated in the (Fig 1).

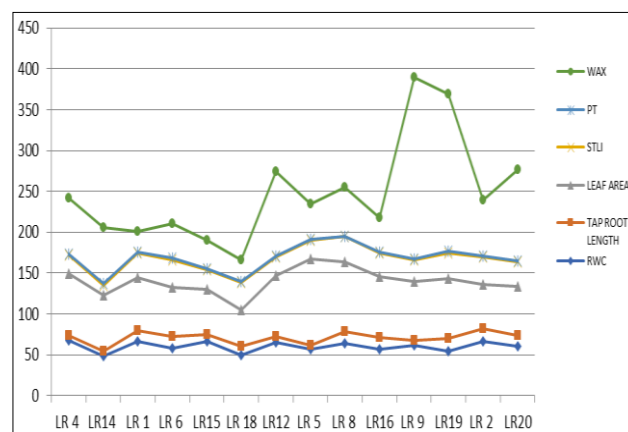


Fig 1 Graph differences between tolerant and susceptible varieties of common bean

Table 3 Pearson correlations between the 20 varieties of common bean

| | RWC 4 Hrs | RWC 6Hrs | Basal whorls | Stomatal abaxial | Proline Test | Wax |
|-----------------|-----------|----------|--------------|------------------|--------------|--------|
| RWC 2 hours | .715** | .464* | | | | |
| RWC 4 hours | | .765** | | | | |
| Tap Root | | | | .688** | | |
| Whorls | | | .813** | | | |
| Proline control | | | | | .736** | -445** |

Common bean is cultivated under drought condition in several developing countries, where drought is the most important factor that limits the production of Latin America, Brazil, Mexico and Africa. They have evolved several mechanisms to maintain plant, water status within reasonable limits for normal metabolic functioning under the drought stress [30]. The common bean water stress reduced between 19% and 37% in the first trifoliate leaf [31] the RWC maintaining capacities in cultivated varieties were more productive [32] and percentage of RWC of excised leaves of the susceptible genotype was substantially lower than that tolerant genotypes and that genotypes from the plant, can retain higher % RWC in water-limited environments [33]. The water stress conditions and the tolerant varieties maintenance of a high RWC [34-36]. According to our results the reduced water stress between 14% and 31% in the terminal leaf and the tolerant varieties have higher water holding capacity (68%-62%) compared to susceptible varieties (49%-60%) in 6 hours stress. The tolerance varieties maintaining higher water content than the susceptible varieties.

Drought tolerant varieties have longer root length and highest root weight than susceptible varieties [37], drought avoidance through greater root length density and deeper soil moisture [38]. Generally, root length was higher in the tolerant genotypes than the susceptible genotypes. The results of the present study indicate that the deep tap root length of the tolerant variety is higher (16cm in LR2) than the susceptible variety which is over (5cm in LR5). Likewise, basal root shows higher value than the susceptible one. Also, the tolerant varieties have higher number of root whorls than the susceptible varieties.

A significantly decrease in leaf area of the susceptible parents could be due to an accelerated leaf senescence as well as loss of turgor [39]. In the cases of stress and non-stress conditions, leaf area in susceptible genotypes was more than that in tolerant genotypes, thus drought tolerance may be attributed to less transpiration and water loss because of smaller size and reduced leaf area in tolerant genotypes when drought stress develop [40]. The results show that higher leaf surface area of 105.5 cm² in LR 5 which is one of the susceptible varieties than the tolerant variety showing leaf surface area of 84.5 cm² in LR 8. The number of stomata between the abaxial surface and the adaxial surface showed no significant differences in all the genotypes [41]. In the present

study, it was observed that the mean stomatal index per square millimeter was more in case of the tolerant genotype as compared to the susceptible genotype.

In common bean susceptible varieties Bayo Madero showed a significant increase in proline concentration in, higher than that obtained for the drought resistant cultivar. Although the information on proline accumulation under drought in common beans is scarce, some studies have suggested that proline accumulates in drought-susceptible cultivars as a symptom of stress and not necessarily as a consequence of osmotic adjustment [42]. An increase in proline was related with a decrease in leaf water status in drought susceptible genotype [43]. In our results shows that susceptible varieties is higher than the tolerant varieties. Leaf harvest wax amount was not related to other parameter such as specific leaf area and stomatal index [44]. Mulberry accessions elevated from the leaf surface wax amount and crystal size and density exhibited reduced leaf post-harvest, water loss and could, proved the foundation for selective breeding of improved cultivators. The present study, indicates that the susceptible varieties have higher proline content than the tolerant varieties where, increased proline is related with decreased RWC.

CONCLUSIONS

In conclusion, this paper indicates that the parameters determined are (RWC), seedling root length, leaf area, stomatal index, wax and proline. The results obtained from this experiment show us that the tolerant varieties have higher water holding capacity than the susceptible varieties. Generally, tolerant varieties are higher in root length, leaf area and stomatal index and wax. In such cases, the root length and the leaf area were higher in susceptible varieties. There is no significant of both abaxial and adaxial surface of stomatal index. It is clearly observed that the proline content is higher in susceptible varieties when compared to the tolerant varieties. However, more proline accumulations are related to decrease RWC. A significant correlation was observed by using the parameters. The tolerant genotype could take up more water than the susceptible genotype and it maintains a better growth. The improvement of drought tolerance and susceptible varieties for common bean is a major objective for many breeding programs in different regions.

LITERATURE CITED

1. Celmeli T, Hatice SID, Canci H, Sari D, Alper AID, Eker T, Toker C. 2018. The nutritional content of common bean (*Phaseolus vulgaris* L.) landraces in comparison to modern varieties. *Agronomy* 8(166): doi:10.3390/agronomy8090166.
2. Barclay DV, Heredia L, Gil-Ramos J, Montalvo MM, Lozano R, Mena M, Dirren H. 1996. Nutritional status of institutionalized elderly in Ecuador. *Arch. Latinoam. Nutr.* 46: 122-127.
3. Victor MT, Roberto RM, Beatriz SC. 2008. Systemic nature of drought-tolerance in common bean. *Plant Signal Behav.* 3(9): 663-666.
4. Blum A. 1988. *Plant Breeding for Stress Environments*. CRC Press Florida 212. pp 223.
5. Zadraznik T, Kristin H, Wolfgang EJ, Vladimir M, Jelka SV. 2013. Differential proteomic analysis of drought stress response in leaves of common bean (*Phaseolus vulgaris* L.). *Journal of Proteomics* 78: 254-272.
6. Ray H, Bett K, Tar'an B, Vandenberg A, Thavarajah D, Warkentin T. 2014. Mineral micronutrient content of cultivars of field pea, chickpea, common bean, and lentil grown in Saskatchewan, Canada. *Crop Sci.* 54: 1698-1708.
7. Rauf S. 2008. Breeding sunflower (*Helianthus annuus* L.) for drought tolerance. *Commun. Biometry Crop Sci.* 3: 29-44.
8. Choudhury AK, Karim MA, Haque MM, Khaliq QA, Ahmed JU, Hossain MM. 2014. Leaf water status and its relationship with reproductive responses of common bean (*Phaseolus vulgaris* L.) genotypes under water stress. *American Journal of Plant Sciences* 5: 1547-1556.
9. Mokter HM, Xueyi L, Xusheng Q, Hon ML, Zhanga J. 2014. Differences between soybean genotypes in physiological response to sequential soil drying and rewetting. *The Crop Journal* 2: 366-380.

10. Lydia LA. 2013. Evaluation of root traits associated with drought tolerance in dry bean (*Phaseolus vulgaris* L.). A Thesis Submitted to Michigan State University in partial fulfillment of the requirements for the degree of Plant Breeding, Genetics and Biotechnology - Crop and Soil Sciences – Master of Science.
11. White JW, Castillo JA. 1989. Relative effect of root and shoot genotypes and yield on common bean under drought stress. *Crop Sci.* 29: 360-362.
12. Acosta-Gallegos JA. 1988. Selection of common bean (*Phaseolus vulgaris* L) genotypes with enhanced drought tolerance and biological nitrogen fixation. Ph. D. Dissertation, Michigan State University, East Lansing, MI.
13. Mitra J. 2001. Genetics and genetic improvement of drought resistance in crop plants. *Curr. Sci.* 80: 758-762.
14. White JW. 1988. Preliminary results of the bean international drought yield trial (BIDYT), in research on drought tolerance in common bean. Working Document No. 41, (Eds) White J. W., Hoogenboom J. W. D., Ibarra F., Singh S. P. Cali, Colombia: CIAT. pp 126-145.
15. Trivedi R. 2014. Morpho-anatomical characterization of groundnut genotypes showing differential reaction to late leaf spot pathogen. *Journal of Botany* 12. <http://dx.doi.org/10.1155/2011/658240>.
16. Araus JL, Slafer GA, Reynolds MP, Royo C. 2002. Plant breeding and drought in C3 cereals: what should we breed for? *Ann. Bot.* 89: 925-940.
17. Kavi KPB, Hong Z, Miao GH, Hu CAA, Verma DPS. 1995. Over-expression of [delta]-pyrroline-5-carboxylate synthetase increases proline production and confers osmotolerance in transgenic plants. *Plant Physiol.* 108: 1387-1394.
18. Sanchez-Rodríguez E, Rubio-Wilhelmi MM, Cervilla LM, Blasco B, Ríos JJ, Rosales MA, Romero L, Ruiz JM. 2010. Genotypic differences in some physiological parameters symptomatic for oxidative stress under moderate drought in tomato plants. *Plant Sci.* 178: 30e40.
19. White JW, Singh SP. 1991. Breeding for adaptation to drought. In: (Eds) A. van Schoonhoven and O. Voysest. Common beans: Research for crop improvement. CAB International, Wallingford, UK & CIAT, Cali, Colombia. pp 501-560.
20. Ebercon A, Blum A, Jordan W. 1977. A rapid colorimetric method for epicuticular wax content of sorghum leaves. *Crop Science* 17(1): 179-180.
21. Skoss JD. 1955. Structure and composition of plant cuticle in relation to environmental factors and permeability. *Botanical Gazette* 117: 55-72.
22. Smart RE, Bingham GE. 1974. Rapid estimates of relative water content. *Plant Physiology* 53: 258-260
23. McGee DC. 1988. *Maize Diseases: A Reference Source for Seed Technologists*. APS Press St. Paul. MN. pp 150.
24. Kaydan D, Yagmur M. 2008. Germination seedling growth and relative water content of shoot in different seed sizes of triticale under osmotic stress of water and NaCl. *African Journal of Biotechnology* 7: 2862-2868.
25. Pandey SK, Singh H. 2011. A simple, cost-effective method for leaf area. *Journal of Botany* Vol. Article ID 658240, 6 pages. <http://dx.doi.org/10.1155/2011/658240>
26. Edwin-Wosu, Nsirim L, Ndukwu CB. 2012. Biosystematic studies in loganiaceae (Series 3): Stomatal morphology in relation to intraspecific delimitation among members of the tree species in the Genus Anthocleista found in parts of Tropical Rainforest in Nigeria. *European Journal of Experimental Biology* 2(3): 807-813.
27. Bates LS, Waldren RP, Teare ID. 1973. Rapid determination of free proline for water-stress studies. *Plant Soil* 39: 205-207.
28. Irigoyen JJ, Emerich DW, Sanchez-Diaz M. 1992. Water stress induced changes in concentrations of proline and total soluble sugars in nodulated alfalfa (*Medicago sativa*) plants. *Physiol. Plant* 84: 55-60.
29. Mamrutha H, Mogili T, Jhansi K, Nitin R, Dylan K, Kumar M, Matthew J, Karaba N 2010. Leaf cuticular wax amount and crystal morphology regulate post harvest water loss in mulberry (*Morus species*). *Plant Physiology and Biochemistry* 48(8): 690-696.
30. Beebe SE. 2012. Common bean breeding in the tropics. *Plant Breed. Rev.* 36: 357-426.
31. Stoyanov ZZ. 2005. Effects of water stress on leaf water relations of young bean plants. *J. Cent. Eur. Agric.* 6: 5-14.
32. Kumar N, Nandwal AS, Waldia RS, Singh S, Devi S, Sharma KD, Kumar A. 2012. Drought tolerance in chickpea as evaluated by root characteristics, plant water status, membrane integrity and chlorophyll fluorescence techniques. *Expl. Agric.* 48(3): 378-387.
33. Batlang U. 2010. Identification of drought-responsive genes and validation for drought resistance in rice. Crop and Soil Environmental Science, Virginia Polytechnic Institute and State University. Blacksburg, VA.
34. Chaves MM, Maroco JP, Pereira JS. 2003. Understanding plant responses to drought: From genes to whole plant. *Func. Plant Biol.* 30: 239-264.
35. McCann SE, Huang B. 2008. Evaluation of drought tolerance and avoidance traits for six creeping bentgrass cultivar. *Hort. Sci.* 43(2): 519-524.
36. Moaveni P. 2011. Effect of water deficit stress on some physiological traits of wheat (*Triticum aestivum*). *Agric. Sci. Res.* 1(1): 64-68.
37. Manjeru P, Madanzi T, Makedredza B, Nciizah A, Sithole M. 2007. Effect of water stress at different growth stage on components and grain yield of common bean (*Phaseolus vulgaris* L.). *Afr. Crop Science Conference Proceedings* 8: 299-303.
38. Sponchiado BN, White JW, Castillo JA, Jones PG. 1989. Root growth of four common bean cultivars in relation to drought tolerance in environments with contrasting soil types. *Experimental Agriculture* 25: 249-257.
39. Canavar O, Gotz KP, Frank E, Chmielewski FM, Kaynak MA. 2014. Determination of the relationship between water use efficiency, carbon isotope discrimination and proline in sunflower genotypes under drought stress. *Af. Jr. Crop Sci.* 8(2): 232-242.
40. Ganjeali A, Hassan P, Abdolreza B. 2011. Assessment of Iranian chickpea (*Cicer arietinum* L.) germplasms for drought tolerance. *Agricultural Water Management* 98: 1477-1484.
41. Ambachew D, Mekbib F, Asfaw A, Beebe SE, Blair MW. 2015. Trait associations in common bean genotypes grown under drought stress and field infestation by BSM bean fly. *Crop Journal* 3: 305-316.
42. Asfaw A, Blair MW. 2014. Quantification of drought tolerance in Ethiopian common bean varieties. *Agric. Sci.* 5: 124-139.
43. Andrade JL, Larqué-Saavedra A, Trejo CL. (1995). Proline accumulation in leaves of four cultivars of *Phaseolus vulgaris* L. with different drought resistance. *Phyton* 57: 149-157.
44. Maggio A, Saori M, Paola V, Tomomichi F, José II, Barbara D, Meena LN, Paul MH, Robert JJ, Ray AB. 2002. Does proline accumulation play an active role in stress-induced growth reduction? DOI: 10.1046/j.1365-313X.2002.01389.x.